

**The MEG**  
(Previously published as Meg: A Novel of Deep Terror)  
2020 Color Illustrated PDF Version  
Including the Prequel “MEG: Origins” at the end of the book.  
**CURRICULUM ANSWER KEY**



Dear Teachers:

The following pages contain the answers for the curriculum items that have answers. We have also included the page numbers where the answers may be found.

**The materials are divided as follows:**

1. Characters
2. Vocabulary
3. Chronological Events
4. True-False Questions
5. Multiple Choice Questions
6. Acronyms
7. Vessels
8. Megalodon Shark Anatomy
9. Science/Oceanography
10. Settings
11. Projects

## CHARACTERS



Characters listed appear in either **The MEG** or **Meg: Origins**, or in **both**.

The page number listed under the characters' names is the first mention of the character.

### Major Characters:

Professor Jonas Taylor

**Pg. 5**

Dr. Frank Heller

**Pg. 37**

James "Mac" Mackreides

**Pg. 43**

Paul Agricola

**Pg. 248**

Maggie Taylor

**Pg. 7**

Bud Harris

**Pg. 12**

Terry Tanaka

**Pg. 10**

Masao Tanaka

**Pg. 10**

### Minor Characters:

Captain George Nares

**Pg. 229**

Richard Danielson

**Pg. 37**

Richard Prestis

**Pg. 253**

Mike Shaffer

**Pg. 253**

Gustave Maren

**Pg. 283**

David Adashek

**Pg. 16**

D.J. Tanaka

**Pg. 20**

Alphonse DeMarco

**Pg. 32**

Captain Leon Barre

**Pg. 45**

John Paul

**Pg. 90**

Commander McGovern

**Pg. 94**

André Dupont

**Pg. 95**

Dr. Tsukamoto

**Pg. 95**

Dr. Simidu

**Pg. 95**

Dennis Heller

**Pg. 118**

Wade, Dylan & Austin Maller

**Pg. 119**



## MEG VOCABULARY

The page numbers correspond with the exclusive color PDF version of this book, and the words listed appear on the pages shown below, though they may also appear in other places throughout the book.

p. 1	lethal	p. 66	mesmerized	p. 123	quivering	p. 240	subterranean
p. 4	scavengers	p. 68	adrenaline	p. 127	maelstrom	p. 242	archipelago
p. 4	predatory	p. 69	gargantuan	p. 128	gnashing	p. 244	renowned
p. 7	decimated	p. 69	torso	p. 129	ambient	p. 247	excursions
p. 7	specimen	p. 70	spasms	p. 131	encumbering	p. 248	erratic
p. 8	encrustations	p. 72	hyperextended	p. 135	frenzy	p. 249	sophisticated
p. 9	conjecture	p. 73	jettisoning	p. 142	unique	p. 249	consensus
p. 9	smattering	p. 73	claustrophobia	p. 143	plethora	p. 250	temperate
p. 10	stint	p. 73	groped	p. 148	contortions	p. 250	ferocity
p. 14	aberrations	p. 76	bombarding	p. 156	cavernous	p. 253	monotonous
p. 17	feigned	p. 77	hypothermia	p. 158	unfathomable	p. 254	bulbous
p. 21	titanium	p. 77	furtively	p. 164	legacy	p. 256	unfurled
p. 23	cetacean	p. 78	paralleling	p. 179	sensory	p. 257	habitat
p. 23	obstinate	p. 82	devastated	p. 183	plummeting	p. 28	coalesced
p. 29	nauseating	p. 87	abandon	p. 184	evolution	p. 59	symbiotic
p. 30	emphasizing	p. 87	environment	p. 186	listing	p. 260	adaptation
p. 31	inhabitants	p. 87	originating	p. 187	vigil	p. 260	quarantined
p. 32	integrity	p. 87	tantalizing	p. 192	dirigible	p. 261	expended
p. 38	extinct	p. 88	infrastructures	p. 201	simultaneously	p. 262	undulating
p. 40	contraption	p. 89	perimeter	p. 207	dormant	p. 262	debris
p. 44	rampage	p. 90	seaworthy	p. 212	esophagus	p. 264	serrated
p. 50	denticles	p. 92	submerged	p. 212	regurgitated	p. 264	succulent
p. 52	tapestry	p. 93	precariously	p. 215	discernible	p. 267	maneuvered
p. 55	bioluminescent	p. 97	genetic	p. 215	excretions	p. 278	huddled
p. 56	bizarre	p. 98	aggressive	p. 217	relinquished	p. 270	partakes
p. 59	hyperventilating	p. 98	migration	p. 219	silhouette	p. 274	agitated
p. 61	massive	p. 99	culmination	p. 221	flammable	p. 276	equilibrium
p. 61	vertigo	p. 100	tranquilize	p. 229	incessant	p. 277	influx
p. 62	spewing	p. 104	elaborate	p. 237	mentor	p. 279	obscured
p. 62	theorized	p. 105	vindicated	p. 238	trepidation	p. 281	submersible
p. 62	desolate	p. 110	fluke	p. 238	buoyant	p. 283	beckoned
p. 64	albino	p. 113	rendezvous	p. 239	attributes	p. 285	credibility
p. 65	hallucinated	p. 118	scapegoat	p. 239	acuity	p. 287	evaluation
p. 66	periphery	p. 121	lacerations				



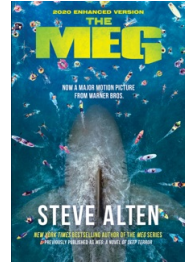
## CHRONOLOGICAL EVENTS

The following items are in the order in which they occurred in the book. Please fill in the answer(s) to each item.

1. Professor Jonas Taylor lectured at The Scripps Institute about: **[Pgs. 5-11] Megalodon / His theory that Megalodons could still exist.**
2. Maggie Taylor earned the Golden Eagle for her work about: **[Pg. 17] Whales.**
3. UNIS drones had been deployed along a 125 mile stretch of the Mariana Trench to: **[Pg. 20] Detect seismic disturbances / help detect earthquakes.**
4. The small cockpit of the Beechcraft airplane bothered Jonas because he suffers from: **[Pg. 28] Claustrophobia.**
5. What reporter did Maggie Taylor hire to follow Jonas and leak information to make him look bad. **[Pg. 30] David Adashek.**
6. Masao explained to Jonas that the Lagoon was his dream because of his life-long love of: **[Pg. 36] Whales.**
7. After Jonas explained to Masao what happened during his dive seven years before, Masao suggested to Jonas that what he really might have seen was: **[Pg. 38] Giant patches of white tube worms.**
8. The name of Masao's ship is the: **[Pg. 42] Kiku.**
9. Jonas was surprised to discover that the *Kiku*'s mechanic was his old friend: **[Pg. 43] James "Mac" Mackreides.**
10. Jonas was dismayed to find out that Masao's physician onboard the *Kiku* was: **[Pgs. 45-46] Frank Heller.**
11. Jonas was humiliated when Frank Heller entered the galley and declared: **[Pg. 51] Jonas was unfit and that Terry would be making the dive.**
12. Shortly into the dive, Jonas panicked and his readings and vital signs went into the red zone because: **[Pg. 59] Terry was blasting a Guns N' Roses song into Jonas's headset.**
13. Jonas found the white triangular object he had seen in the video at Masao's lagoon. He was embarrassed to realize it was: **[Pg. 64] The arm of a dead albino starfish.**
14. The male Meg was trapped by: **[Pgs. 70-71] The cable from the Kiku to D.J.'s Abyss Glider.** and killed by: **[Pg. 72] The female Megalodon.**
15. After D. J.'s catastrophe, Jonas made it to the top in: **[Pg. 73] The escape pod.**
16. Maggie rushed to Guam to: **[Pg. 81] Do a news story on the Megalodon.**
17. Jonas told Terry the female shark could have come to the surface because: **[Pg. 82] He saw it rising in the wounded male's bloodstream.**
18. In Saipan, Jonas and Mac inspected the carcass of a humpback whale. What did Jonas find there and what happened next? **[Pg. 92] Found a white Megalodon tooth; then the Megalodon surfaced to feed on the whale.**

- 
19. Who agreed to underwrite the funding for the completion of Masao's lagoon and the hunt to capture the Megalodon? **[Pg. 100] JAMSTEC.**
- 
20. Mac's role in capturing the Megalodon was: **[Pg. 103] To track it with his helicopter.**
- 
21. Mac explained to Jonas the features of the Abyss Glider-I that made it different from the Abyss Glider-II that he used on his dive with D.J. Name three of these different features.  
**[Pg. 115] The AG-I was smaller and sleeker; faster; lighter; couldn't go deeper than 2,000 meters; could leap ten feet into the air; had a hydrogen booster.**
- 
22. The first U.S. Navy nuclear-powered submarine was the: **[Pg. 116] U.S.S. Nautilus.**
- 
23. The surfer Rick Bohler thought he was underwater, but he was really:  
**[Pg. 121] Inside the Megalodon's mouth.**
- 
24. Dylan Maller was surfing a big wave to reach shore as the Megalodon bore down on him, and he was saved by: **[Pg. 124] His brothers, Wade and Austin, on the jet-ski.**
- 
25. The Japanese vessel that put out a distress call had an illegal catch of eighteen:  
**[Pg. 127] Gray whales.**
- 
26. Frank Heller stretched out his hand but could not save: **[Pg. 136] His brother, Dennis Heller.**
- 
27. Maggie Taylor took her expedition to what area near the Farallon Islands?  
**[Pg. 145] The Red Triangle.**
- 
28. The stench surrounding the *Magnate* came from: **[Pgs. 145-146] The excrement of nearby sea elephants and seals and/or a dead whale carcass being hauled by the ship as bait.**
- 
29. The female Megalodon gave birth to 1 male pup(s), and 2 female pup(s). **[Pgs. 148-149]**
- 
30. A male Megalodon pup died when: **[149] Its mother ate it.**
- 
31. Maggie Taylor's experience with the Megalodon ended with: **[Pg. 162] Her death as she was attacked by the Megalodon.**
- 
32. Bud Harris was saved from being eaten by the Megalodon when: **[Pg. 163] Mac shined a searchlight from his helicopter into its eye, blinding the Megalodon.**
- 
33. Andre Dupont of the Cousteau Society said they were seeking to have *Carcharodon megalodon* placed: **[Pgs. 164-165] On the endangered species list.**
- 
34. Jonas learned by watching a news report that David Adashek was a reporter for the same network as: **[Pg. 165] His wife, Maggie Taylor.**
- 
35. Another Megalodon pup died when: **[Pg. 177] It was killed by Orcas.**
- 
36. The *Cap'n Jack's* propeller was bent by: **[Pg. 179] The fluke of the Gray whale.**
- 
37. The large dosage of pentobarbital and ketamine was used to shut down the Meg's:  
**[Pg. 183] Central nervous system.**
- 
38. Terry used the retractable arm of the AG-1 mini-sub to: **[Pg. 185] Position the cargo net under the Megalodon.**
-

- 
39. Frank Heller and Dick Danielson were on Bud Harris's ship, the *Magnate*, in order to:  
**[Pg. 187] Build a depth charge to kill the Megalodon.**
- 
40. When Mac said, "Hope you're in the mood for a Mac Attack!," he was heading for:  
**[Pgs. 193-194] The *Magnate*.**
- 
41. During the chaos after the depth charge detonated, Masao Tanaka suffered:  
**[Pg. 195] A head injury when he fell head-first down the steel steps of the stairwell.**
- 
42. How did the Megalodon get free of the cargo net? **[Pg. 199] The Megalodon's dermal denticles sawed through the cargo net ropes.**
- 
43. Terry was launched into the water when the Megalodon came up under their lifeboat. How did Jonas save Terry? **[Pg. 210] He launched the AG-I out of the water to land on the Megalodon's snout and enticed it to chase him away from Terry.**
- 
44. With the AG-I's batteries depleted, Jonas used the hydrogen rocket to: **[Pg. 211] Launch his sub into the Megalodon's mouth.**
- 
45. Bud Harris shot Mac in the leg, then forced Mac to: **[215] Jump into the water.**
- 
46. How did Jonas keep from slipping into the Megalodon's intestines? **[Pg. 216] He used the fossilized Megalodon tooth to get a grip in the animal's stomach lining.**
- 
47. Jonas was rising to the surface in the escape pod. Why did it slow down? **[Pgs. 221-222] It was taking on water due to the cracks caused by the Megalodon's teeth.**
- 
48. As Jonas was on the way to the recompression chamber, he saw the shark being towed in the trawl net. What did Jonas realize about the shark? **[Pg. 225] He saw that it was albino and had gray-blue eyes, and realized it was a Megalodon pup.**
- 
49. Captain George Nares was in command of the ship: **[Pg. 229] H.M.S. Challenger.**
- 
50. The *Challenger Deep* was the deepest section of: **[Pg. 236] The Mariana Trench.**
- 
51. Early exploration of the *Challenger Deep* was done in 1960. What kind of vehicles were used? **[Pg. 238] Bathyscaphes.**
- 
52. Who are the seafaring people who are indigenous to Guam? **[Pg. 243] The Chamorro.**
- 
53. The *Tallman* was performing a scientific expedition in the: **[Pg. 249] Philippine Sea.**
- 
54. Jonas told Dr. Shaffer that the size of fossilized Megalodon teeth that had been found was: **[Pg. 256] Six to seven inches.**
- 
55. The Megalodon's           **[Pg. 259] Lower**           teeth were used for gripping prey; the           **Upper [Pgs. 259-260]**           teeth were designed to puncture bone, sinew and blubber.
- 
56. By attacking the cuttlefish, the *Kronosaurus* had indirectly challenged:  
**[Pg. 262] The female Megalodon.**
- 
57. The female Megalodon was being lured up into the cold waters by the pings from *Sea Bat-I* initiated by the crew of: **[Pg. 274] The Tallman.**
- 
58. Jonas managed to survive the emergency ascent because he found:  
**[Pg. 282] A pony bottle of oxygen.**
-



## TRUE-FALSE QUESTIONS

- [ ] True [X] False 1. The scenario Jonas presented between the T. rex and Megalodon could have happened exactly as he described it. [Pg. 5] **The Megalodon did not exist until 35 million years after T. rex died off.**
- [X] True [ ] False 2. When sharks die, there is no skeleton because their skeleton is made of cartilage, not bone. [Pg. 6]
- [ ] True [X] False 3. Fossilized Megalodon teeth are pure white. [Pg. 7] **They are gray.**
- [X] True [ ] False 4. Jonas had deep sea submersible training at Woods Hole Oceanographic Institute. [Pg. 13]
- [ ] True [X] False 5. Maggie won an Emmy award at the San Diego Media Awards. [Pg. 17] **It was a Golden Eagle Award.**
- [ ] True [X] False 6. When Jonas left the awards, he took a taxi home. [Pg. 18] **Terry drove him home.**
- [ ] True [X] False 7. The UNIS drones were being deployed into the *Challenger Deep* to enhance long distance telephone cables. [Pg. 20] **It was an earthquake early warning system.**
- [X] True [ ] False 8. The Mariana Trench is the deepest known depression on earth at 35,827 feet below sea level. [Pg. 24]
- [ ] True [X] False 9. The Tanaka Lagoon was originally designed to hold giant squid and Megalodons. [Pg. 31] **It was meant for whales; specifically a safe habitat for female whales to give birth.**
- [X] True [ ] False 10. Masao needs Jonas to help determine what happened to the UNIS drones so JAMSTEC will reinstate their funding to complete his lagoon. [Pg. 36]
- [X] True [ ] False 11. Masao convinced Jonas to make the dive into the *Challenger Deep* both as a favor to Masao, and to help Jonas face his fears. [Pgs. 38-39]
- [X] True [ ] False 12. LEXAN can be used like bullet-proof glass. [Pg. 43]
- [X] True [ ] False 13. Using its ampullae of Lorenzini, a Megalodon could detect the heartbeat of its prey from miles away. [Pg. 49]



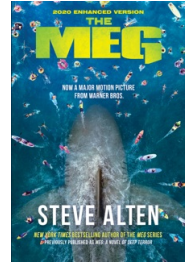
- ☒ True ☐ False 14. Frank Heller declared Jonas wasn't fit to make the dive with D.J., but Masao overrode Heller's decision. **[Pgs. 51-52]**
- ☐ True ☒ False 15. D.J. attempted to get away from the male Megalodon by hiding behind a black smoker. **[Pg. 68] He ascended quickly attempting to get into much colder water where the Megalodon wouldn't go.**
- ☒ True ☐ False 16. When the crew of the *Kiku* couldn't reach either D.J. or Jonas, they decided to tow D.J.'s sub to the surface since the cable from his sub was still attached to the surface ship. **[Pg. 70]**
- ☒ True ☐ False 17. Jonas was shocked to see a larger female Megalodon chasing after the entangled male Megalodon. **[Pg. 72]**
- ☐ True ☒ False 18. David Adashek told Maggie that Jonas was recovering in a hospital on the Hawaiian island, Oahu. **[Pg. 80] It was Guam.**
- ☐ True ☒ False 19. Jonas woke up in the hospital after having a nightmare that he was confronting Maggie and Bud Harris. **[Pg. 84] His nightmare was about being back in the Mariana Trench in the Abyss Glider.**
- ☒ True ☐ False 20. In Saipan, Jonas found a six-inch white Megalodon tooth in the carcass of a dead Humpback whale. **[Pg. 92]**
- ☐ True ☒ False 21. At the briefing on Guam, Jonas told the group the second Megalodon he saw was over 100 feet long. **[Pg. 97] He said it was 60 feet long.**
- ☐ True ☒ False 22. Jonas said the Megalodon wouldn't surface during the day because the prey she preferred would only be around at night. **[Pg. 97] It was because its eyes were too sensitive to light.**
- ☒ True ☐ False 23. While searching for the Megalodon by helicopter, Terry switched the tracker dart with a 20 mm explosive shell. **[Pgs. 107-108]**
- ☐ True ☒ False 24. The Billabong Big Wave Contest took place in Malibu, California. **[Pg. 118] It was held at North Shore, Maui, Hawaii.**
- ☐ True ☒ False 25. Gangbanger Rick Bohler managed to surf to shore ahead of all the others. **[Pgs. 121-122] He surfed into the Megalodon's mouth.**
- ☒ True ☐ False 26. The Megalodon was attracted to the Japanese ship because it was carrying an illegal load of dead gray whales. **[Pg. 127]**



- [ ] True [X] False 27. The *Nautilus* crew fired a torpedo at the Megalodon. [Pgs. 133-134] **The Megalodon attacked and crippled the *Nautilus* before they could fire the torpedo.**
- [X] True [ ] False 28. Frank Heller was horrified when he couldn't save his brother, Dennis, from the Megalodon. [Pg. 136]
- [X] True [ ] False 29. Maggie and her crew left the *Kiku* because there were no sightings of the Megalodon in four weeks, and her network lost interest. [Pg. 137]
- [ ] True [X] False 30. The female Megalodon broke off her attack on the blue whale calf because the bull of the herd chased her off. [Pg. 148] **It was because the Megalodon went into labor.**
- [ ] True [X] False 31. The Megalodon gave birth to six pups, but only three survived. [Pgs. 148-149] **She had only three pups.**
- [X] True [ ] False 32. Maggie went into the water with great white sharks to test her specially-built shark tube. [Pg. 150]
- [ ] True [X] False 33. The Megalodon couldn't get a grip on the round Lexan shark tube Maggie had specially made. [Pg. 156] **Tips of its teeth got a grip on the drainage holes of the tube.**
- [X] True [ ] False 34. A news story reported that the Megalodon had been listed as a protected species. [Pg. 164]
- [X] True [ ] False 35. As Bud Harris left the hospital, Frank Heller and Richard Danielson came to pick him up. [Pg. 170]
- [ ] True [X] False 36. Jonas admitted to Mac that he was having nightmares that Terry was going to be eaten by the Megalodon. [Pg. 171] **His nightmare was that Jonas was going to be eaten by the Megalodon.**
- [ ] True [X] False 37. Jonas realized the Megalodon was now surfacing during the day because it was no longer afraid of the surface boats. [Pg. 179] **It was because it was blind in both eyes and the daylight was no longer a problem.**
- [X] True [ ] False 38. Terry saw the Megalodon wasn't breathing, so she rammed the Abyss Glider into its jaw, forcing it to open so water could flow through and out of its gills. [Pg. 184]
- [X] True [ ] False 39. Once Terry had positioned the cargo net around the captured Megalodon, she noticed the shark had given birth. [Pg. 185]

- ☒ True ☐ False 40. The depth charge accidentally fell off the *Magnate* as the yacht veered sharply after Mac's helicopter attack. **[Pg. 194]**
- ☐ True ☒ False 41. Alphonse DeMarco used the harpoon gun to give the Megalodon a second dose of barbiturates when it managed to get free of the net. **[Pg. 200] He couldn't get the shot off because a speed boat got in his way.**
- ☐ True ☒ False 42. Danielson and Heller convinced Bud Harris to leave the *Magnate* with them in the Zodiac. **[Pg. 203] They took the Zodiac and left Bud Harris behind.**
- ☒ True ☐ False 43. Jonas managed to reconnect the battery wire restoring power to his Abyss Glider. **[Pg. 205]**
- ☒ True ☐ False 44. As the *Kiku* started to sink, all the crew members got into two lifeboats. **[Pg. 207]**
- ☐ True ☒ False 45. The *Magnate* was the vessel that rescued the surviving crew from the *Kiku*. **[Pg. 210] It was the trawler hired by Andre Dupont of the Cousteau Society.**
- ☐ True ☒ False 46. Using a gun, Bud Harris forced Mac to repair the *Magnate's* engines. **[Pg. 215] He forced Mac to jump into the water after shooting him in the thigh.**
- ☐ True ☒ False 47. Mac was rescued by the trawler hired by the Cousteau Society. **[Pg. 219] It was a Coast Guard helicopter.**
- ☒ True ☐ False 48. Jonas used the last few seconds of hydrogen boost trying to shoot himself back out of the Megalodon's mouth. **[Pg. 217 & Pg. 220]**
- ☒ True ☐ False 49. Terry was able to save Jonas, but his rapid ascent caused him to have the bends (nitrogen bubbles in his bloodstream), so they were rushing him to a recompression chamber. **[Pg. 224]**
- ☒ True ☐ False 50. Captain Richard Danielson told Jonas Taylor he would be subject to a court martial if he didn't pilot the *Sea Cliff* on a fourth dive. **[Pg. 241]**
- ☐ True ☒ False 51. The region of Micronesia is located in the North Atlantic Ocean. **[Pg. 242] It is in the Pacific Ocean**
- ☒ True ☐ False 52. James "Mac" Mackreides was a helicopter pilot while stationed on Guam. **[Pgs. 245-246]**

- ☒ **True** ☐ **False** 53. Paul Agricola told the *Tallman* crew that he believed the large animal they had been tracking was a *Carcharodon megalodon*. **[Pg. 250]**
- ☒ **True** ☐ **False** 54. Cuttlefish travel in schools so they appear to be one large creature to scare off potential enemies. **[Pg. 262]**
- ☐ **True** ☒ **False** 55. The juvenile female Megalodon had been tracking a school of barracuda through the trench. **[Pg. 262] It was a school of cuttlefish.**
- ☒ **True** ☐ **False** 56. When Jonas saw something really large on his sonar, he ordered the ROV to be shut down because he said the predator could detect its electrical discharges. **[Pg. 269]**
- ☒ **True** ☐ **False** 57. Jonas was so exhausted from his previous three dives that he kept drifting into catnaps during his fourth dive. **[Pg. 278]**
- ☐ **True** ☒ **False** 58. Paul Agricola told his crew to quickly head south because the Megalodon was coming to the surface. **[Pg. 281] It was to flee the storm and because they noticed the Navy submersible on their sonar near where they had been tracking the Megalodon and they didn't want to be caught still in the area.**



## MULTIPLE CHOICE QUESTIONS

Please circle the letter for the correct answer for each of the questions below.

1. **What did Jonas say the water pressure was at the bottom of the Mariana Trench? [Pg. 10]**  
A. A million lbs. per square inch.      B. 25,000 lbs. per square inch.  
C. **16,000 lbs. per square inch.**      D. 6,000 lbs. per square inch.
2. **Bud Harris had been Jonas's roommate where? [Pg. 12]**  
A. Woods Hole Oceanographic Institute.      B. Scripps Institute.  
C. Boston University.      **D. Penn State University.**
3. **How did Jonas get home from the Media awards? [Pg. 18]**  
A. He hailed a taxicab.      B. He took Bud's limo.  
**C. Terry Tanaka drove him.**      D. He took the bus.
4. **Who came to visit Maggie in her hotel room the morning after the awards ceremony? [Pg. 30]**  
A. Bud Harris.      B. Terry Tanaka.  
**C. David Adashek.**      D. Jonas Taylor.
5. **What did Chief Engineer Al DeMarco say he thought caused the damage to the UNIS drones which had been deployed in the *Challenger Deep*. [Pg. 32]**  
A. A strong underwater current.      B. Not placed properly when deployed.  
C. A manufacturing defect.      **D. Seismic event.**
6. **Jonas decided to return to the Mariana Trench because: [Pgs. 35 & 38-39]**  
A. He wanted to prove to Terry he's strong.      B. He wanted to kill a Megalodon.  
**C. He wanted to collect a white tooth he saw on video to prove Megs still exist.**      D. He wanted to help Masao capture a live Megalodon.
7. **As Jonas was about to land on the *Kiku*, he saw a man doing a water sport next to the ship. What was the water sport? [Pg. 42]**  
**A. Kite boarding.**      B. Water skiing.  
C. Surfing.      D. Parasailing.
8. **When D.J. insisted on knowing more about Megalodons, Jonas told him: [Pg. 49]**  
A. They existed for 400 million years.      B. It was the apex predator of all time.  
C. It could track prey from miles away.      **D. All of the above.**
9. **Mac gave Jonas a neoprene bio-suit to wear during the dive. What did Mac say it would do? [Pg. 52]**  
A. Keep him warmer.      B. Provide extra oxygen if needed.  
**C. Monitor Jonas's vital signs.**      D. Allow him to contact Mac directly without anyone else hearing him.

10. While Jonas was using his sub's mechanical arm to clear debris around the damage UNIS drone, what was D.J. doing? [Pg. 65]
- A. Looking for other UNIS drones. B. Fending off schools of cuttlefish.  
**C. Untangling the cable from his sub's mechanical arm.** D. All of the above.
11. Jonas told D.J. that the large biologic he saw on sonar was homing in on them. What did Jonas say was attracting it? [Pg. 66]
- A. The lights from their subs. B. The motion of nearby fish.  
**C. Vibrations from their subs.** D. It could smell the discharge from the sub.
12. What caused Jonas's sub to go flying across the floor crashing into a black smoker? [Pg. 67]
- A. He accidentally put it in reverse. B. D.J.'s sub collided with Jonas's sub.  
 C. An underwater whirlpool developed and his sub got caught up in it. **D. A concussion wave from the Megalodon's swishing caudal fin.**
13. Why did the male Megalodon keep rising up into the frigid waters? [Pg. 72]
- A. It was caught in the cable connected to D.J.'s sub.** B. It was being chased by a Kronosaurus.  
 C. It was trying to get away from the female Megalodon. D. It was seeking comfort after being scorched by getting too close to a black smoker.
14. The female Megalodon escaped the Mariana Trench by: [Pg. 72]
- A. Chasing Jonas's sub to the surface. B. Being hooked and hauled to the surface by the *Kiku*.  
**C. Staying within the dead male's blood flow as it was towed up.** D. Chasing a school of squid that was heading for the surface.
15. At the press conference on Guam, what did Frank Heller say was the reason he was convinced no other Megalodons came to the surface? [Pg. 77]
- A. He was sure only one could have have possibly existed in the first place. **B. It couldn't have made it through six miles of near-freezing temperatures.**  
 C. He didn't see any other Megalodons. D. They saw a second Megalodon, but destroyed it right away.
16. Jonas had Mac fly him to Saipan because: [Pg. 85]
- A. He saw a news report on whales and dolphins beaching themselves there.** B. He wanted to get away from all the reporters.  
 C. He heard Maggie was coming and he didn't want to see her. D. He thought there was a better hospital on Saipan.
17. How did Jonas and Mac get away from the Megalodon in Saipan? [Pg. 93]
- A. They outran it using John Paul's boat. B. They hid under a pier.  
 C. They hit it on the snout with their oars. **D. They jumped onto a buoy.**

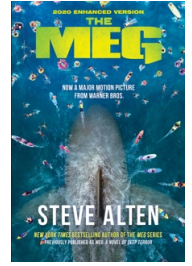
18. During Commander McGovern's briefing on Guam, what surprising detail did Jonas disclose about the female Megalodon? [Pg. 97]  
 A. It was much smaller than the male. B. It was darker in color than the albino male.  
**C. It was pregnant.** D. It was not the reason the male had died.
19. Maggie and her crew were allowed on the *Kiku* while they were trying to capture the Megalodon because: [Pg. 102]  
 A. She wanted to reconcile with Jonas. **B. Her network was sponsoring the expedition.**  
 C. She bribed a JAMSTEC official. D. Terry agreed to it to get back at Jonas.
20. Jonas's plan to capture the Megalodon was to: [Pg. 104]  
 A. Lure it into the Tanaka lagoon with a dead whale. B. Attract it by using sonar pings.  
 C. Capture it on a big hook. **D. Drug it, then haul it into the Tanaka lagoon inside a net equipped with inflatable buoys.**
21. When Jonas and Mac spotted the Megalodon from the helicopter, she was stalking: [Pg. 109]  
 A. A school of squid. B. A pod of dolphins.  
**C. A Humpback whale calf.** D. All of the above.
22. When the Megalodon launched itself at Mac's helicopter, what did Terry do? [Pgs. 107-108 & Pg 112]  
**A. She shot a 20 mm shell at the Meg but missed.** B. She threw Maggie's camera out the window.  
 C. She hit it with a tracking dart. D. She dropped the rifle trying to save Jonas.
23. Whose idea was it to use the *Nautilus* submarine to hunt down the Megalodon. [Pg. 117]  
 A. Frank Heller. B. Alphonse DeMarco.  
**C. Richard Danielson.** D. Cmdr. Bryce McGovern.
24. The Japanese ship in the Oahu coastal waters put out a distress call because it was being attacked by the Megalodon. What attracted the Meg to the ship? [Pgs. 128-129]  
 A. The *Nautilus* accidentally chased the Meg toward the Japanese ship. **B. The Meg detected dead whales which were illegally lashed to the outside of the ship.**  
 C. The ship was blowing its horn which attracted the Megalodon. D. The ship was already sinking before the Megalodon showed up.
25. The Megalodon attacked the *Nautilus* because: [Pgs. 129-130]  
**A. It was drawn to it by the sonar pings.** B. It was hungry.  
 C. It knew Jonas was onboard. D. It thought the submarine was another shark.

26. What happened to Frank Heller's younger brother, Dennis Heller, who was a crewman on the *Nautilus*. [Pg. 136]
- A. He sank with the *Nautilus*. B. He was killed by an explosion on the *Nautilus*.  
**C. He was killed by the Megalodon just as he reached the *Kiku*.** D. He was picked up by another ship coming to the aid of the Japanese whaler.
27. Maggie and her crew left the *Kiku* because: [Pg. 137]
- A. She had a fight with Terry, and Masao asked them to leave. **B. With no sighting of the Meg in four weeks her station terminated the project.**  
 C. Jonas kicked them off. D. Her station gave them information that the Megalodon had been sighted in Australia.
28. Maggie convinced her station manager to send her and a crew to The Red Triangle area near the Farallon Islands off the coast of northern California. How did she convince him? [Pgs. 141 & 146]
- A. She wanted to vacation in that area for a few days with Bud Harris.  
**B. She had found Jonas's research that the area was a prehistoric Megalodon nursery, and figured that's where the female would go.**  
 C. She was monitoring Jonas's activities and thought he was headed in that direction.  
 D. David Adashek reported to her that the Meg had been sighted there.
29. After three days near the Farallon Islands, what was causing the tremendous odor hanging around the *Magnate* being used by Maggie and her crew? [Pg. 146]
- A. They were towing a dead whale as bait.** B. No one had showered in days.  
 C. There were dead seals from the islands floating by the yacht. D. The yacht's waste system was backed up.
30. While in the helicopter, Jonas contacted Bud Harris on the *Magnate*. What did Bud tell Jonas? [Pg. 159]
- A. He wanted to apologize to Jonas. **B. He needed Jonas's help to rescue Maggie.**  
 C. He wanted to warn them about the Megalodon. D. He was telling Jonas to stay away from his yacht.
31. What stopped the Megalodon from attacking Bud Harris after it killed Maggie? [Pg. 163]
- A. Mac directed a bright light into its eye.** B. Someone dropped a camera onto its nose.  
 C. Jonas lured it away with the Zodiac. D. Bud managed to get back onto the yacht.
32. Jonas packed a good luck charm as he prepared to return to Monterey. What was it? [Pg. 169]
- A. His wedding ring. **B. A fossilized Megalodon tooth.**  
 C. A medal he received while in the Navy. D. A rabbit's foot.
33. Jonas told Mac a story about Butch O'Hare. Who was he? [Pgs. 171-173]
- A. A World War II fighter pilot. B. The namesake of Chicago's main airport.  
 C. The son of mobster, Easy Eddie. **D. All of the above.**



34. Frank Heller and Richard Danielson were on the *Magnate* preparing what? [Pg. 187]  
**A. An explosive to kill the Megalodon.** B. A submarine so they could view the Meg.  
 C. A cable to take the Meg from the *Kiku*. D. Something to jam the Tanaka Lagoon gates.
35. Who came onto the *Magnate* after the underwater explosion? [Pg. 197]  
 A. Jonas Taylor **B. James Mackreides.**  
 C. Masao Tanaka. D. Alphonse DeMarco.
36. After Masao suffered a head injury in a fall on the *Kiku*, how did he get off the ship? [Pg. 202]  
 A. A Coast Guard boat came to get him. B. Mac borrowed a speedboat to take him.  
**C. David Adashek convinced his news helicopter to land on the *Kiku*.** D. An EVAC helicopter landed on the *Kiku*.
37. The Boston Whaler that Jani Harper was piloting collided with a cabin cruiser, and the two vessels became stuck together. How did they become separated? [Pg. 205]  
 A. The Coast Guard attached a cable to the top ship and pulled it off.  
**B. The impact of the Megalodon crashing into them pushed them apart.**  
 C. Heller and Danielson reached them in the Zodiac and helped them.  
 D. The passengers from both boats worked together to separate them.
38. After Jonas lured the Megalodon away from Terry and the other survivors of the overturned life raft, who rescued them? [Pg. 210]  
**A. The boat hired by Andre Dupont of the Cousteau Society.** B. Mac and Bud Harris with the *Magnate*.  
 C. The *Cap'n Jack* whale watching boat. D. Heller and Danielson with the Zodiac.
39. With the battery of the Abyss Glider completely drained, Jonas saw the Megalodon headed right for him, gigantic mouth open wide. What did Jonas do? [Pg. 211]  
 A. He hit the escape pod release and shot right to the surface. **B. He ignited the hydrogen fuel and headed right into the Meg's mouth.**  
 C. He used the hydrogen burn to get to the sunken *Kiku* where he hid. D. He turned off lights and all noise hoping the Meg wouldn't know he was there.
40. After Bud Harris shot Mac in the thigh, what did he force Mac to do? [Pg. 215]  
**A. Jump off the *Magnate* into the water.** B. Repair the *Magnate's* engines.  
 C. Take him to shore in the Zodiac. D. Fix the yacht's pumps to keep it from sinking.
41. As Jonas headed to the surface after the Megalodon expelled the Abyss Glider, what distressing thing did he notice. [Pg. 221]  
 A. The Meg was chasing him. B. There was a huge fireball about to overtake him.  
**C. The Meg's teeth caused deep grooves in the Lexan which were leaking water.** D. Dozens of great white sharks were circling The Abyss Glider.

42. When Jonas exited the escape pod, how did he get to the surface? [Pg. 224]  
**A. Terry swam down hauled him to the surface just as he was about to sink.**  
 B. Once his weight was out of the escape pod it was buoyant enough to float him up.  
 C. A trawler lowered a cable to him. D. He swam to the top.
43. What kind of storm was “Marian” that was headed straight for the area where the *Maxine D* was anchored? [Pg. 235]  
 A. A tornado. **B. A category 2 typhoon.**  
 C. A monsoon. D. A category 3 hurricane.
44. The scientists on the *Maxine D* were collecting something from the bottom of the *Challenger Deep*. What was it? [Pg. 239]  
 A. Exotic fish species. B. Volcanic rock that contained gold.  
**C. Manganese nodules.** D. All of the above.
45. The *Tallman* was privately owned by Agricola Industries. What kind of ship was it? [Pg. 249]  
**A. Research and scientific vessel.** B. Submarine.  
 C. Cargo ship. D. Oil tanker.
46. What was the Megalodon’s most common food source when they dominated the oceans? [Pg. 260]  
 A. Dinosaurs that ventured into the water. **B. Whales.**  
 C. Smaller sharks. D. Crustacean called “krill.”
47. What was the nickname of the ROV the scientists used to make their collections from the bottom of the trench. [Pg. 266]  
**A. Flying Squirrel.** B. Bullwinkle.  
 C. Little Sea Cliff. D. Baby Max.
48. As Dr. Shaffer deployed the ROV, he jokingly used a quote from what movie? [Pgs. 267-268]  
 A. Jaws. B. Titanic.  
 C. Home Alone. **D. Caddyshack.**
49. Benedict Singer had a secret meeting with *Maxine D* crewman, Gustave Maren, when he paid him to get something for him from the ship. What was it? [Pgs. 283-284]  
 A. The schematic for the ROV. **B. A manganese nodule.**  
 C. A pregnant female squid. D. Log notes from the scientists.
50. What did Captain Danielson find in the wreck of the *Sea Cliff* that he secretly disposed of? [Pg. 286]  
 A. Manganese nodules. **B. A white Megalodon tooth.**  
 C. A photo Jonas took of what he saw. D. Proof one of the scientists caused the disaster.

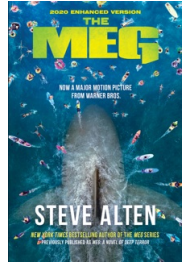


## ACRONYMS

Following are some acronyms that appeared in the book. Please circle the letter for the correct designation of each acronym.

1. **DSV [Pg. 235]**
  - A. Debris Sensitive Viewer
  - B. Deep Submergence Vehicle**
  - C. Demolition Submersible Vessel
  - D. Damage Sensing Vacuum
2. **JAMSTEC [Pg. 20]**
  - A. Japan and Micronesia Seismic Tension Experiment Certification
  - B. Jointly Authorized Mariana Sea Trench Earthquake Calculation
  - C. Japanese Atomic Munitions Special Tracking Elimination Control
  - D. Japan Marine Science & Technology Center**
3. **MBES [Pg. 249]**
  - A. Multi-Beam Echo Sounder**
  - B. Metal Booster Emitting Scope
  - C. Micro-Biologic Energy System
  - D. Marine Bathyscape Educational Simulator
4. **P.A.G.A.S.A. [Pg. 235]**
  - A. Pacific Gasoline Safety Association
  - B. Pan-Asian Geographic Abyssal Sensor Alliance
  - C. Philippine Atmospheric Geophysical and Astronomical Services Administration**
  - D. Pan-American Global Aquatic Safety Assembly
5. **ROV [Pg. 249]**
  - A. Robotic Ocean Vessel
  - B. Radio Onboard Voltage
  - C. Retractable Obstacle Viewer
  - D. Remotely-Operated Vehicle**
6. **UNIS [Pg. 18]**
  - A. Underwater Navigation Identifying Scale
  - B. Unmanned Nautical Informational System**
  - C. Ultra-Nanobot In-depth Seismograph
  - D. Uncharted National Inactive Seaport

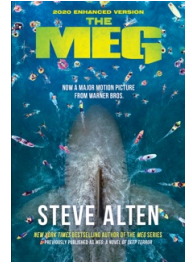
## VESSELS



Following are the names of water vessels that played a part in this book. Please match each vessel to the correct description.

- |          |   |                    |
|----------|---|--------------------|
| <b>G</b> | The submersible Jonas was using with the two scientists in the <i>Challenger Deep</i> when he initiated an emergency ascent. [Pgs. 252-253] | A. Abyss Glider-II |
| <b>E</b> | The luxury yacht owned by Bud Harris. [Pg. 78]  | B. Cap'n Jack      |
| <b>A</b> | The submersible D.J. and Jonas used on their mission to retrieve the damaged UNIS drone. [Pg. 43]   | C. HMS Challenger  |
| <b>C</b> | The scientific vessel from 1873 whose captain was George Nares. [229]   | D. Kiku            |
| <b>I</b> | The first United States Navy nuclear submarine. [Pgs. 115-116]  | E. Magnate         |
| <b>B</b> | The sight-seeing / whale watching boat from Monterey wharf. [Pg. 173]   | F. Maxine D        |
| <b>H</b> | The research vessel owned by Agricola Industries. [Pg. 248]   | G. Sea Cliff       |
| <b>F</b> | The navy support ship for Jonas's first dive into the Mariana Trench. [Pg. 234]   | H. Tallman         |
| <b>D</b> | The research vessel owned by Masao Tanaka. [Pgs. 20 & 42]   | I. USS Nautilus    |

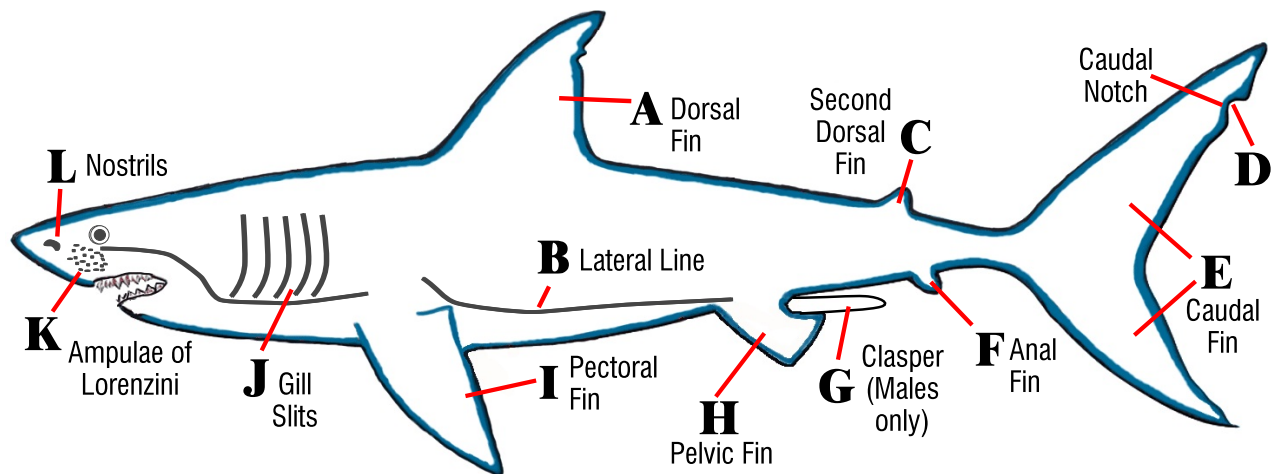
## The MEG MEGALODON SHARK ANATOMY



Please identify the parts of the Megalodon by inserting the correct letter in front of its corresponding description:

Most of the locations of a Megalodon's anatomical parts are described on pages **260-261**. Other page numbers are where specific anatomical parts are also described and/or their functionality is described. There is also an shark anatomical diagram on page **101**.

<b>K</b>	Ampullae of Lorenzini [Pgs. 2, 25, 49, 250, 262]	<b>G</b>	Clasper (males only) [Pg. 74]	<b>L</b>	Nostrils [Pgs. 2, 49, 50, 72, 133, 134, 261]
<b>F</b>	Anal Fin [Pg. 260]	<b>A</b>	Dorsal Fin [Pgs. 2, 87, 92, 260]	<b>I</b>	Pectoral Fin [Pgs. 71, 112, 193, 260, 262, 270, 281]
<b>E</b>	Caudal Fin [Pgs. 2, 67, 70, 71, 74, 87, 93, 149, 156, 185, 198, 260, 261, 276]	<b>J</b>	Gill Slits [Pg. 71, 104, 149, 274, 277, 280]	<b>H</b>	Pelvic Fin [Pg. 260]
<b>D</b>	Caudal Notch [Pg. 260]	<b>B</b>	Lateral Line [Pgs. 50, 71, 111]	<b>C</b>	Second Dorsal Fin [Pg. 260]

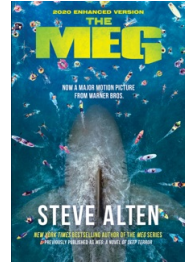


## MEG SCIENCE/OCEANOGRAPHY



### Matching:

- |   |                                 |
|---|---------------------------------|
| A. Great white Shark. [Pgs. 96, 145 250]  | <b>O</b> Anglerfish             |
| B. Riftia pachytila – an 8'-10' invertebrate. [Pgs. 41, 63, 259]  | <b>Q</b> Archimède & Trieste    |
| C. A sixty-foot-thick “ceiling” that insulates the frigid waters from the warm bottom of the Mariana Trench. [Pgs. 7, 37, 64, 14, 238, 258, 259, 268] | <b>I</b> Black Smoker           |
| D. This rarely seen deep sea fish has large, bulbous eyes. [Pg. 57]   | <b>A</b> Carcharodon Carcharias |
| E. This is what makes up a shark’s skin. [Pgs. 50, 199]   | <b>H</b> Carcharodon Megalodon  |
| F. Pinniped is the suborder of this carnivorous mammal. [Pgs. 144, 145]   | <b>L</b> Challenger Deep        |
| G. This is the generation of heat in a shark’s blood using its swimming muscles. [Pgs. 7, 250]  | <b>K</b> Coelacanth             |
| H. This is a prehistoric shark. [Pg. 2] (First mention)   | <b>P</b> Cuttlefish             |
| I. Chimneys of hardened mineral deposits spewing dark clouds of superheated mineralized water. [Pgs. 62, 63, 67, 258]                                 | <b>E</b> Dermal Denticles       |
| J. Nickname of the expanse of ocean near the Farallon Islands. [Pgs. 144, 145]  | <b>G</b> Gigantothermy          |
| K. A lobe-finned fish once believed to be extinct. [Pg. 6]  | <b>D</b> Hatchetfish            |
| L. The bottom/lowest point of the Mariana Trench. [Pgs. 8, 20, 62, 236]   | <b>C</b> Hydrothermal Vent      |
| M. This crocodilian-like marine reptile lived during the Middle Cretaceous period. [Pgs. 262-263]   | <b>M</b> Kronosaurus            |
| N. Another name for a killer whale. [Pgs. 177, 260]   | <b>F</b> Northern Elephant Seal |
| O. This species of fish has a lighted rod fin that dangles over its mouth enticing prey. [Pgs. 59, 255]   | <b>N</b> Orca                   |
| P. This animal requires three hearts to pump blood through its body. [Pg. 261]  | <b>J</b> Red Triangle           |
| Q. Bathyscaphes used to explore the Mariana Trench and Challenger Deep. [Pg. 24]  | <b>B</b> Tube Worms             |



## MEG SETTINGS

1. Challenger Deep [Pgs. 8-10, 20-24, 31, 33, 37, 41, 43, 45, 50, 51, 62, 63, 65, 71, 96, 120, 236, 238, 273, 274, 277, 281]
2. Farallon Islands [Pgs. 7, 143-146, 149, 154, 158, 168, 174, 175, 177, 239, 249, 250]
3. Hadal Zone [Pgs. 27, 249, 250]
4. Island of Guam [Pgs. 24, 37, 40, 42-49, 76, 80, 81, 87, 94, 116, 235, 236, 243, 244, 246, 247, 256, 269, 285]
5. Mariana Trench [Pgs. 8-10, 14, 16, 19, 21, 24, 35, 36, 38, 40, 50, 61, 77, 96, 98, 105, 115, 169, 176, 193, 236, 238, 241, 242, 258-262, 270, 288]
6. Monterey Bay Sanctuary/Monterey Bay National Marine Sanctuary [Pgs. 146, 164, 165, 174]
7. Monterey Submarine Canyon [Pg. 142]
8. North Shore, Maui, Hawaii [Pg. 118]
9. Pearl Harbor, Oahu, Hawaii [Pgs. 125, 127, 132, 137]
10. Philippine Sea [Pgs. 20, 86, 101, 234, 235, 242, 249]
11. Saipan [Pgs. 85, 88, 89, 93, 98, 101, 104]
12. San Diego / La Jolla, CA [Pgs. 5, 13-15, 20, 23, 30, 78, 137, 140, 287]
13. Tanaka Oceanographic Institute [Pgs. 10, 20-23, 26, 30, 31, 77, 80, 138, 165, 170, 201]
14. Turtle Bay, Bahia Tortugas, Baja California, Mexico [Pgs. 139, 140]